

# LED High Bay Light

## DATASHEET

### Key Features



- Heat pipe riveting and massive fins cooling technology
- Built-in power supply design, options for reflectors with 45°/90°/110° beam angle
- Scale type reflector to achieve higher illuminance in the same wattage
- Fashionable design, protection efficiently
- PHILIPS LUMILEDS 3030 as light source, CRI over 80Ra, and 110 lumen per watt.
- BOKE LED Driver, SAA approved, high PF value over 0.95
- CE, RoHS, SAA approved for the high bay light and 5 years warranty

### Image Show



### Application



Widely used in other places require high bay lighting: factories, warehouses, logistics centers, exhibition halls, stadiums, shipyards, mines, highway toll stations, gas stations, supermarkets, farmer markets and so on.

## Detailed Features

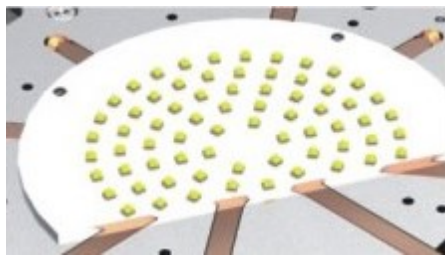
### 1. Heat Pipe Riveting and Massive Fins Cooling Technology

By using the 6mm heat pipe, the heat generated by the lighting quickly transfers to the cooling module of massive radiation fins, efficiently reduce the temperature of the LED lighting chips and extend the life span of the light source



### 3-D Heat Dissipation

Professional heat dissipation structure design. Modular heatsink with perfect structure and inside airflow channels maxim the 3D heat dissipation



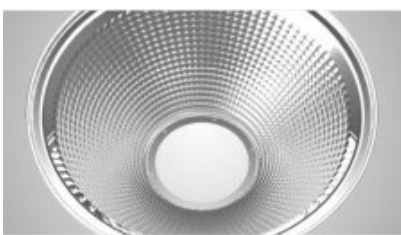
### HDT Technology

High efficient heat pipes contact the heat source directly, maximum the performance of the heat pipe

### Compressed Fins Technology

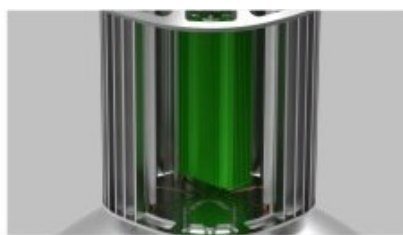
Rivet the heat pipe to heat sink body closely, minimize the heat resistance, greatly improve the heat dissipation effect, and it is much lighter compared with similar products

### 2. Built-in power supply design, options for reflectors with 45°/90°/110°



### Scale style reflector

With anodizing and polishing, high purity aluminum reflectors, minimize the glazing as well as optimize the lighting performance



### Built-in power supply design

Integral interior power driver design is good at small size, which makes the whole lamp look more harmonious and beautiful.



# LED High Bay Light DATASHEET

## Specification

SKU	WQF-GKD100W06	WQF-GKD120W06	WQF-GKD150W06	WQF-GKD180W06	WQF-GKD200W06	WQF-GKD240W06	WQF-GKD300W06
Power	100W	120W	150W	180W	200W	240W	300W
Lumen	1100 lm	13200 lm	16500 lm	19800 lm	22000 lm	26400 lm	33000 lm
PF	>0.9	>0.9	>0.9	>0.9	>0.9	>0.9	>0.9
Input Voltage	85-265 VAC						
CCT	3000K, 4000K, 5000K, 6000K						
CRI	Ra>80						
Efficiency	110 lm/w						
LED Chip	PHILIPS LUMILEDS 3030						
LED Driver	BOKE LED Driver						
Housing Color	Silver						
IP Grade	IP55						
Beam Angel	60°, 120°						
Material	Aluminum						
Working Temp.	-30°C ~ +45°C						
Lifespan	50000 hours						
Warranty	5 year						

## Packing Information

SKU	Power	PCS/CTN	KG/PCS	Gross Weight	CBM
WQF-GKD100W06	100W	1	0.5 KG	10.50 KG	25.5*25.5*36 cm ≈0.0234 m <sup>3</sup>
WQF-GKD120W06	120W	1	1.1 kg	12.00 KG	25.5*25.5*39 cm ≈0.0254 m <sup>3</sup>
WQF-GKD150W06	150W	1	1.7 KG	13.80 KG	25.5*25.5*39 cm ≈0.0254 m <sup>3</sup>
WQF-GKD180W06	180W	1	2.5 KG	13.00 KG	25.5*25.5*39 cm ≈0.0254 m <sup>3</sup>
WQF-GKD200W06	200W	1	4.7 KG	9.5 kg	25.5*25.5*44cm ≈0.0286 m <sup>3</sup>
WQF-GKD240W06	240W	1	5.7 KG	12 KG	30*30*45 cm ≈0.041 m <sup>3</sup>
WQF-GKD300W06	300W	1	6.25 kg	13 KG	30*30*50 cm ≈0.045 m <sup>3</sup>
<b>Reflector Packing: 46cm*46cm*25cm ≈0.0529m<sup>3</sup> (20 pcs per carton)</b>					